



HILLCREST SCHOOL

The Bridge Prospectus





Our Vision

Hillcrest School is set in the Village of Cramlington in Northumberland. The Bridge provision is located in a self-contained lodge to promote independence and to meet the needs of young people with many different needs.

Students attend Hillcrest Bridge provision in Year 11 and 12. Our aim is to prepare our students for life beyond Hillcrest School. The Bridge journey helps to prepare our students for adulthood by giving them the skills and confidence that they will need for the future. During their time in The Bridge, students are given various opportunities to realise their full potential and prepare them for the future.

Mission Statement

"Aiming High: dream, believe, achieve"

We believe in, and strive to create, a community of learners where everyone feels valued in a welcoming, supportive and safe environment. When students leave Hillcrest School, they should be more resilient, confident, responsible, independent, respectful and life-long learners.

Our Ethos

- To promote opportunities for developing independence
- To develop skills for adulthood
- To create a friendly, welcoming and all inclusive environment
- To treat everyone equally with respect and care
- To enable students to realise their full potential

Our Curriculum

In The Bridge, the emphasis of the curriculum is on life skills and preparing our students for the future. Therefore, we provide a wide ranging curriculum to cater for the needs of all students and their additional needs. The majority of



the curriculum is accredited and all students are provided with the opportunity to develop their achievements at a pace that is appropriate to individual need.

The programmes offered in the The Bridge are:

- AQA Step up to English
- AQA Entry Level Maths
- WJEC ICT
- ASDAN
- The Duke of Edinburgh's Award
- Skill Builder Programme
- Individual Study
- Work experience





The Duke of Edinburgh's Award

We have a 3 year plan for delivering The Duke of Edinburgh's Award from Year 10 through to Year 12. We work very closely with colleagues from the Award who support us in the planning and delivery of the programme. Students will be given the opportunity to participate in the 4 areas of the award - volunteering, skill, physical and expedition. We are very proud to be a registered centre for the delivery of The Duke of Edinburgh's Award.





AQA Step up to English / AQA Entry Level Maths

Students will study an English and maths curriculum from Entry Level 1 to Level 2. Within the curriculum, there are opportunities to develop functional skills to help to prepare them for adulthood. This curriculum also helps to support the transitions into work, college and independent living.

Where appropriate, students will be able to study towards GCSE qualifications - close working relationships with other colleagues, the student and their family will help to support this route if it is appropriate for the learner.

ASDAN

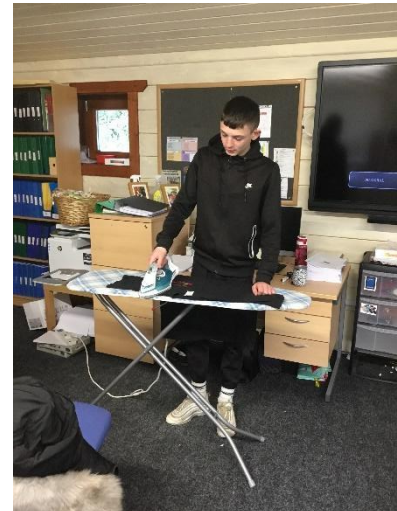
In The Bridge, we deliver the Personal Development Programme - bronze silver and gold. The programme offers imaginative ways of developing, recording and certificating a wide range of personal qualities, abilities and achievements, as well as introducing pupils to new activities and challenges. All the programmes link to nationally recognised qualifications. Within the programme students are encouraged to develop self-assessment and reflection, a key skill to support preparation for adulthood. We will also be delivering Lifeskills Challenge which links with the preparation for adulthood outcomes - Employment, Independent Living, Friends, relationships and community and Good Health.





Functional skills programme

All students follow a functional skills curriculum where they have opportunities throughout the year to develop functional skills including washing, ironing, cooking and shopping on a budget.



Homegrown @ Hillcrest

The Bridge has its own allotment area where students can learn skills in growing plants, fruit and vegetables. Students have been able to use the produce they have grown as part of their own cookery projects and have used when running a community cafe.



Independent travel

Independent travel is a lifelong skill that we aim to develop in The Bridge. Students will be supported to learn about independent travel with the ultimate aim of them becoming confident and independent travellers. For some students, the aim is for them to experience a range of travel opportunities with a level of support.



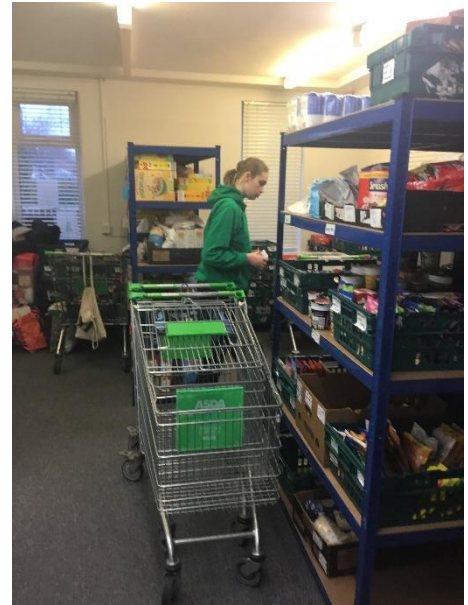
Work Experience

All students in The Bridge are given opportunities to participate in work experience. Our ultimate aim is to match students to an appropriate work placement that reflects their individual interests. Placements have included Homes for Northumberland, The Wildlife Sanctuary, a care home for the elderly and Blyth Sports Centre. There have also been school based opportunities for students to experience a range of different jobs, including our community cafe - Lounge @ The Lodge, a car washing service and the school tuck shop.

Currently, The Bridge has developed links with our local food and clothes bank, The Hope Centre. Here, students work alongside volunteers to collect food, sort out food parcels and collect/sort clothes. This is an invaluable opportunity for



students to experience the world of work whilst also working with our local community supporting people in need.





SMSC

SMSC is embedded into The Bridge curriculum. As a group we explore and challenge beliefs both formally and informally.

Spiritual

Explore beliefs and experience; respect faiths, feelings and values; enjoy learning about oneself, others and the surrounding world; use imagination and creativity; reflect.

We explore spirituality through our curriculum such as PSHE and ASDAN. Students learn a great deal about themselves for example through the RSE curriculum, work experience, THRIVE and emotional literacy interventions.

Moral

Recognise right and wrong; respect the law; understand consequences; investigate moral and ethical issues; offer reasoned views.

We have regular discussions about issues from around the world. As a group we promote tolerance including race, religion and sexuality. We participate in whole school focus days/weeks including LGBTQ+ and anti bullying.

Social

Use a range of social skills; participate in the local community; appreciate diverse viewpoints; participate, volunteer and cooperate; resolve conflict; engage with the 'British values' of democracy, the rule of law, liberty, respect and tolerance.

All students participate in work experience opportunities. *** Pre Covid. We are currently looking into other opportunities ***

We have worked as a team to provide a café and car washing service for the school community. We currently participate in work experience through a local community food and clothes bank - these enterprises promote many social and moral skills including teamwork, respect and tolerance. We promote British values through the focus on working together as a team towards one goal. Students are taught that they need to work hard, be cooperative and respect one another through different initiatives including work experience. All students participate in a whole school merit system where they gain merits for a variety of reasons including care for others and resilience. This promotes mutual respect and a positive attitude towards work.

Cultural

Appreciate cultural influences; appreciate the role of Britain's parliamentary system; participate in culture opportunities; understand, accept, respect and celebrate diversity.

Through our reflection and discussion time, students explore different cultures. As a group we work together to promote equality and respect individuality. Two pupils are currently members of the school council.



Working in Partnership

Partnerships with parents

We have regular contact with parents through phone calls and face to face meetings (pre covid). It is imperative that relationships between school and home are developed and maintained with the student at the centre.

Partnerships with other professionals

We have a holistic approach and have developed positive working relationships with multi-agency colleagues including Social Services, Speech and Language Therapists and CYPs. We also work closely with our school Intervention team with many of the students having personalised support plans and interventions. We have a Service Level Agreement with the Learning and Skills Guidance Team who provide independent and impartial careers information, advice and guidance for our students.

Partnerships with other schools and colleges

We have close links with TyneMet College, Northumberland College, Buzz learning, Barnardos and Azure. These links give some of our students the opportunity to access a wide range of courses and resources. They also provide opportunities for our students to meet other young people and develop confidence in new environments. We aim to give our students options for the future and to support their transition towards life after Hillcrest. We have positive links with other similar provisions in our region through Post 16 SEND transition meetings.



Hillcrest Big 5 Key Drivers

Strive to thrive for:

- Social development and communication
- Emotional health and well being
- Academic achievement
- Functionality
- Aspirational futures